

Richard M Fleming¹, Matthew R Fleming¹, Tapan K Chaudhuri² and William C Dooley³

¹PhD, MD, FHFI-OmnificImaging-Camelot, Los Angeles, CA, USA

²MD, Eastern Virginia Medical School, Norfolk, Virginia, USA

³MD, University of Oklahoma Health Sciences Center, Oklahoma, USA

Received: 13 November, 2019

Accepted: 17 December, 2019

Published: 18 December, 2019

*Corresponding author: Richard M Fleming, PhD, MD, FHFI-OmnificImaging-Camelot, Los Angeles, CA, USA, E-mail: drrichardmfleming@gmail.com

Keywords: FMTVDM: The Fleming Method for Tissue and Vascular Differentiation and Metabolism; Breast cancer; Breast Implants

ORCID: <https://orcid.org/0000-0001-9964-1518>

<https://www.peertechz.com>



Case Report

The Fleming Method for Tissue and Vascular Differentiation and Metabolism-Finding breast cancer in women with breast implants

cancer can be obtained in women with dense breasts and/or breast implants using FMTVDM. Elevated measurements reveal both inflammation and cancer in this patient.

Women with both dense breasts and breast implants present a special challenge for consideration due to the increased incidence of false-positives and false-negatives with mammography [1]. Molecular Breast Imaging [MBI] has provided limited proven benefit until recently, when improvements in camera calibration, enhancement and quantification [2,3], resulted in the ability to differentiate tissue based upon measurable changes in regional blood flow and metabolism [4].

In a 54-year old Caucasian woman with sub-mammary breast implants and a family history of breast cancer, molecular breast imaging using *FMTVDM was performed and is shown in Figure 1, including FMTVDM obtained measurements. The majority of the breast tissue reveals either *normal* range FMTVDM values or *inflammatory* changes. However, cancer is also present with measured values of 301 and 396. These measured FMTVDM values are measurements of the tissue regional blood flow and metabolism. The breast implant is neither metabolically active nor has blood flow. Consequently it qualitatively appears as a blackened area on the imaging reflecting no isotope presence. Figure 2 includes arrows establishing the breast implant and cancer regions.

Teaching point: Non-invasive assessment and measurement of breast tissue looking for evidence of inflammation or

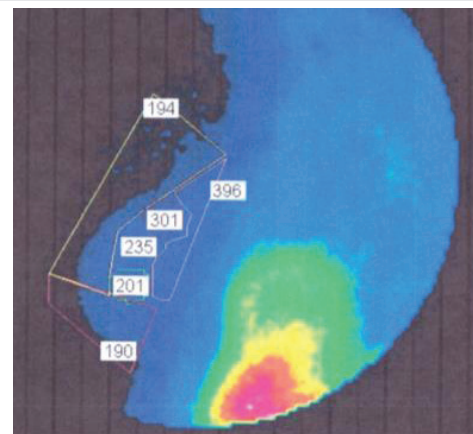


Figure 1: FMTVDM imaging showing FMTVDM quantification of various regions of the breast and breast implant. The color is for human visual purposes and is not diagnostic.

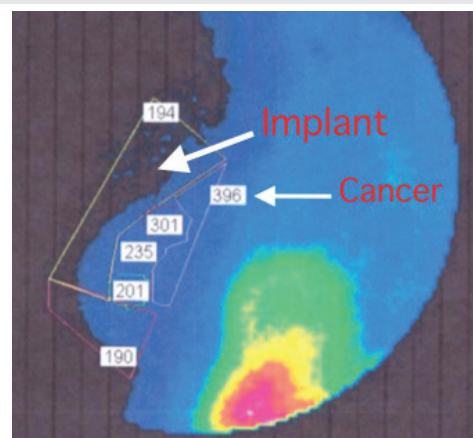


Figure 2: FMTVDM imaging with identifying markers for the breast implant and cancer. The color is for human visual purposes and is not diagnostic.



***FMTVDM: The Fleming Method for Tissue and Vascular Differentiation and Metabolism**

Acknowledgement

*FMTVDM: The Fleming Method for Tissue and Vascular Differentiation and Metabolism issued to first author. The patient signed informed consent at the Nevada Imaging location for the procedure and release of results for publication.

References

1. Miller AB, Wall C, Baines CJ, Sun P, To T, et al. (2014) Twenty-five-years follow-up for breast cancer incidence and mortality of the Canadian National

Breast Screening Study: randomized screening trial. *BMJ* 348: g366. [Link: http://bit.ly/2Pxx1QX](http://bit.ly/2Pxx1QX)

2. The Fleming Method for Tissue and Vascular Differentiation and Metabolism (FMTVDM) using same state single or sequential quantification comparisons. Patent Number 9566037.
3. Fleming RM, Dooley WC (2002) Breast enhanced scintigraphy testing distinguishes between normal, inflammatory breast changes, and breast cancer: a prospective analysis and comparison with mammography. *Integr Cancer Ther* 1: 238-245. [Link: http://bit.ly/2RZAOMO](http://bit.ly/2RZAOMO)
4. Fleming RM, Fleming MR (2019) The Importance of Thinking about and Quantifying Disease like Cancer and Heart Disease on a "Health-Spectrum" Continuum. *J Compr Cancer Rep* 3: 1-3. [Link: http://bit.ly/36MaYQr](http://bit.ly/36MaYQr)

Discover a bigger Impact and Visibility of your article publication with Peertechz Publications

Highlights

- ❖ Signatory publisher of ORCID
- ❖ Signatory Publisher of DORA (San Francisco Declaration on Research Assessment)
- ❖ Articles archived in worlds' renowned service providers such as Portico, CNKI, AGRIS, TDNet, Base (Bielefeld University Library), CrossRef, Scilit, J-Gate etc.
- ❖ Journals indexed in ICMJE, SHERPA/ROMEO, Google Scholar etc.
- ❖ OAI-PMH (Open Archives Initiative Protocol for Metadata Harvesting)
- ❖ Dedicated Editorial Board for every journal
- ❖ Accurate and rapid peer-review process
- ❖ Increased citations of published articles through promotions
- ❖ Reduced timeline for article publication

Submit your articles and experience a new surge in publication services (<https://www.peertechz.com/submission>).

Peertechz journals wishes everlasting success in your every endeavours.

Copyright: © 2019 Fleming RM, et al. This is an open-access article distributed under the terms of the Creative Commons Attribution License, which permits unrestricted use, distribution, and reproduction in any medium, provided the original author and source are credited.

Citation: Fleming RM, Fleming MR, Chaudhuri TK, Dooley WC (2019) The Fleming Method for Tissue and Vascular Differentiation and Metabolism-Finding breast cancer in women with breast implants. *Imaging J Clin Medical Sci* 6(1): 097-098. DOI: <https://dx.doi.org/10.17352/2455-8702.000129>