

Clinical Image

Exclusive Image Gallery on Human Spinal Cord Regeneration

Giselher Schalow*

MD, PhD, Untere Kirchmatte 6, CH-6207 Nottwil, Switzerland

Received: 22 May, 2019

Accepted: 15 June, 2019

Published: 16 June, 2019

*Corresponding author: Giselher Schalow, Professor, Untere Kirchmatte 6, CH-6207 Nottwil, Switzerland, E-mail: g_schalow@hotmail.com

<https://www.peertechz.com>

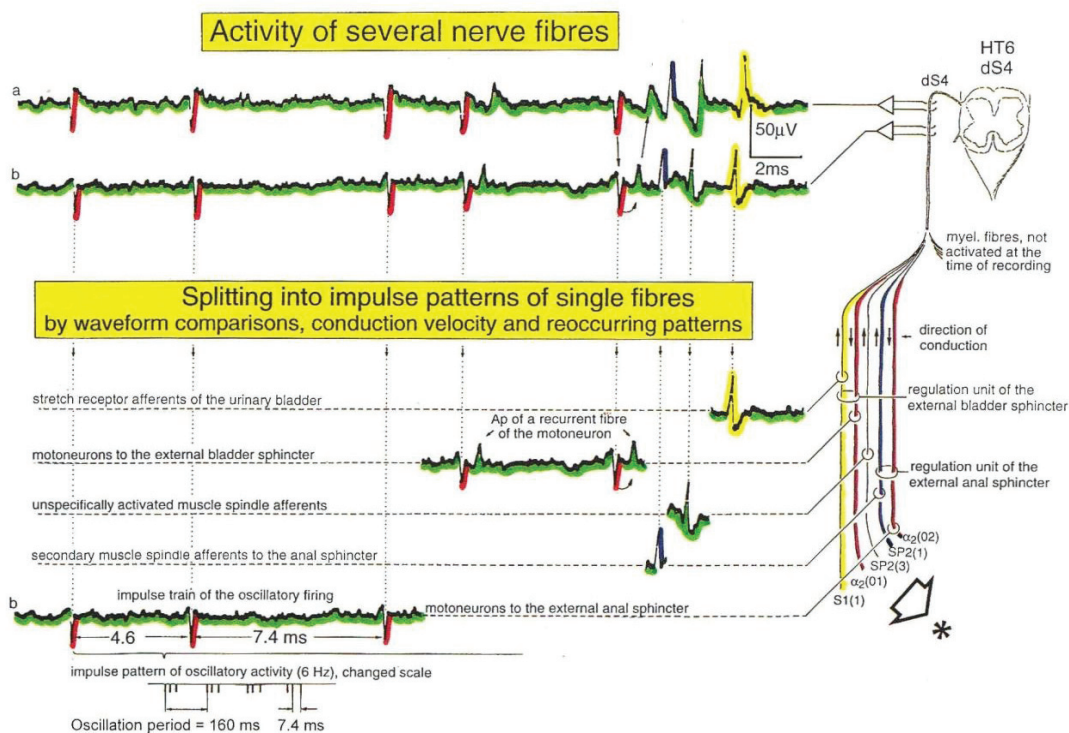


Figure 7: Schematic splitting of the activity of several nerve fibres into simultaneous impulse patterns of single fibres by comparing waveforms, conduction velocities and reoccurring characteristic impulse patterns (rhythmic firing of sphincteric motoneurons). The different conduction times and waveforms were recognized on an expanded time scale. Stretch receptor and secondary muscle spindle afferents contribute to the drive of sphincteric motoneurons and form, together with other afferents, regulation units.

Copyright: © 2019 Schalow G. This is an open-access article distributed under the terms of the Creative Commons Attribution License, which permits unrestricted use, distribution, and reproduction in any medium, provided the original author and source are credited.